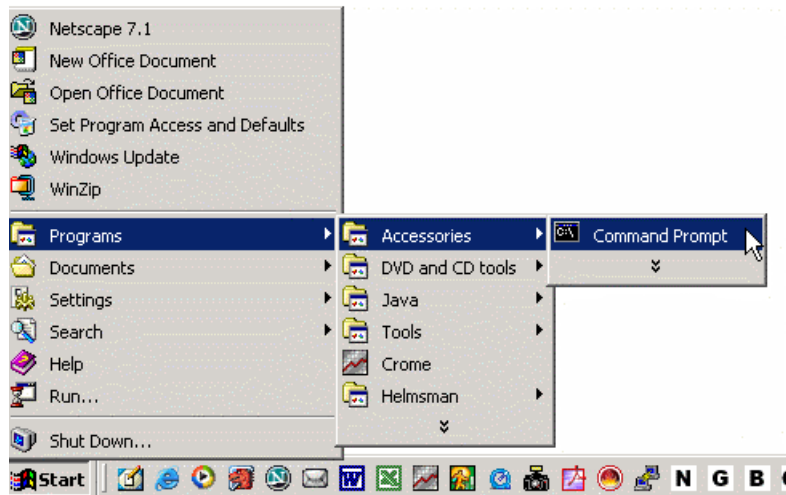


CROME Firewall test - direct access to port 80 (HTTP)

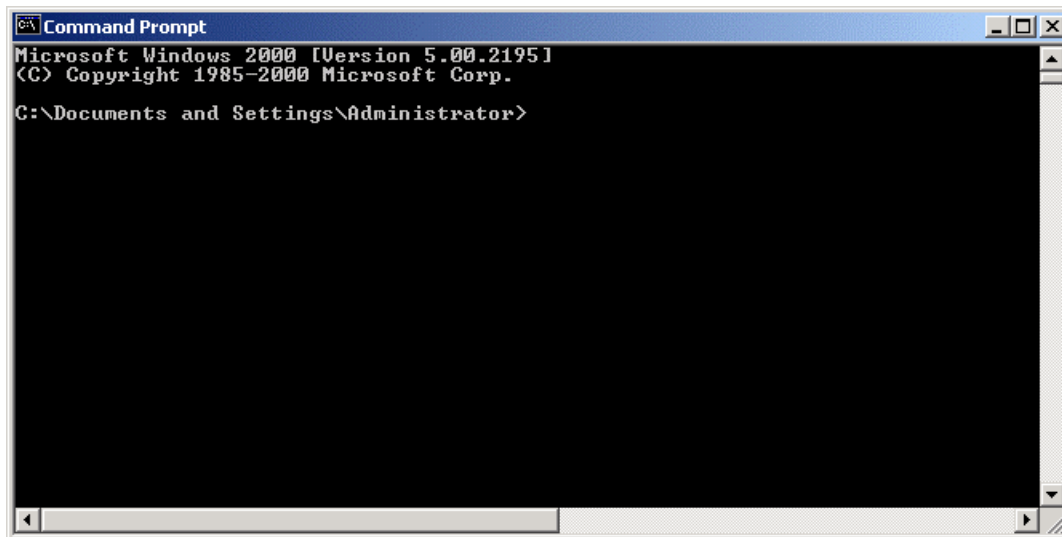
Step 1.

You can start a DOS shell and run telnet to test direct HTTP access from a Windows client host as follows:



Step 2.

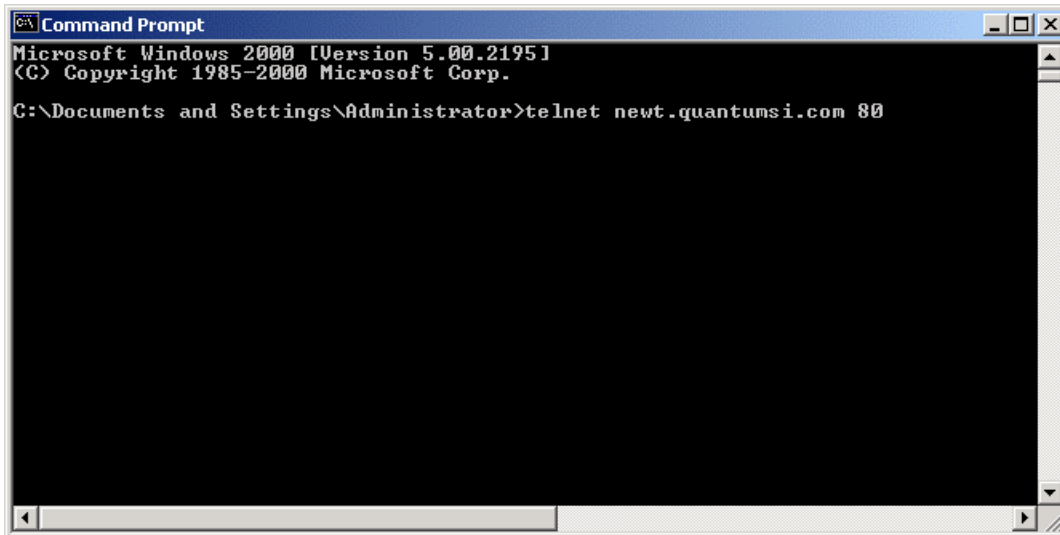
At this point you will get a DOS window



Step 3.

Now type the below command in "bold" (cut-n-paste the below line)

telnet newt.quantumsi.com 80



```
Command Prompt
Microsoft Windows [Version 5.00.2195]
(C) Copyright 1985-2000 Microsoft Corp.

C:\Documents and Settings\Administrator>telnet newt.quantumsi.com 80
```

Hit a single carriage return (the screen will clear)



```
Command Prompt - telnet newt.quantumsi.com 80
```

Step 4.

You are now the telnet application now type the below command in "bold" (cut-n-paste the below line)

GET /cgi-bin/simpletest HTTP/1.0

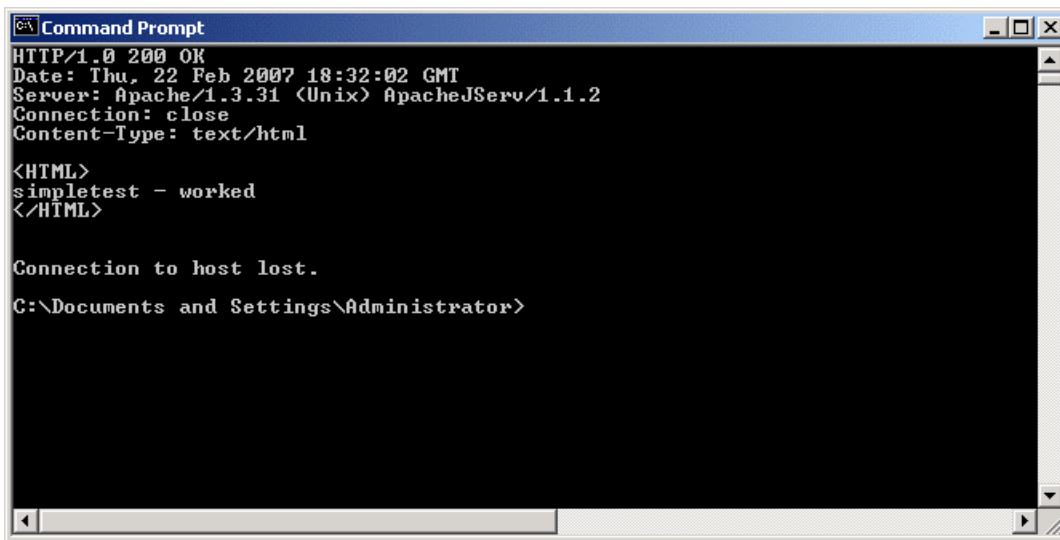
Step 5.

The screen will still be blank (you will not see the characters you pasted) - hit two (2) carriage returns

<CR>

<CR>

and a direct HTTP request will be sent if all is successful you will have the following output.



```
Command Prompt
HTTP/1.0 200 OK
Date: Thu, 22 Feb 2007 18:32:02 GMT
Server: Apache/1.3.31 (Unix) ApacheJServ/1.1.2
Connection: close
Content-Type: text/html

<HTML>
simpletest - worked
</HTML>

Connection to host lost.
C:\Documents and Settings\Administrator>
```

If your system has direct access to port 80 the screen will print information as above "**simpletest - worked**" - this shows that you will be able to connect directly to the HTTP server on newt.quantumsi.com.

If you see messages like "**Connecting To newt.quantumsi.com...Could not open a connection to host on port 80 : Connect failed**" this is indicative of a firewall issue.

Finished.

Now just close the window (click on the X in the upper right).